



**AUSCYCLING**

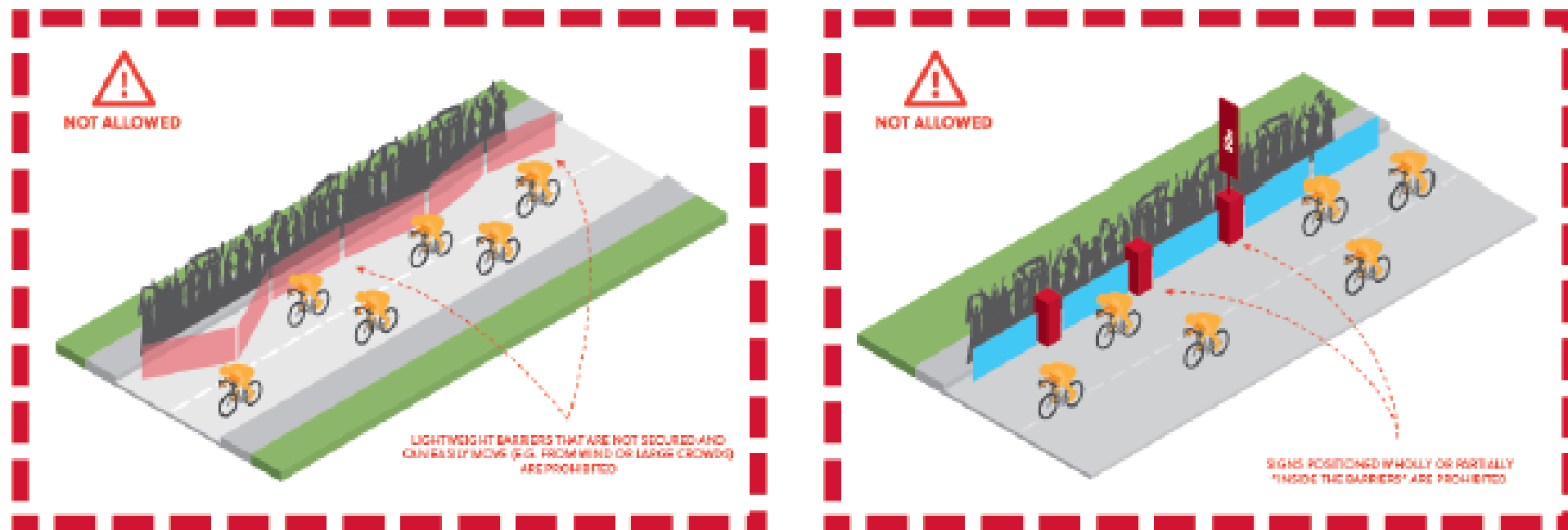
# SAFETY REGULATIONS

1 APRIL 2021

# Organisation Regulation Changes – Course Safety

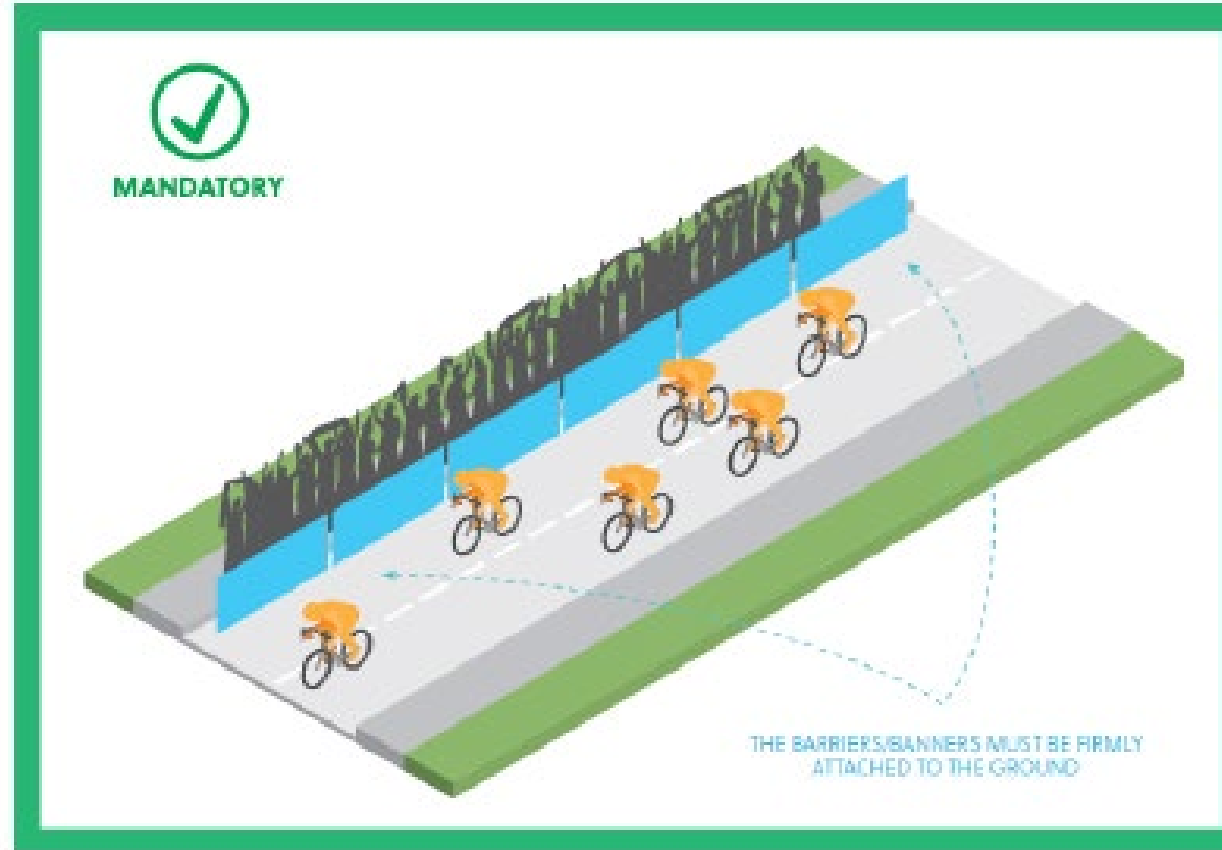
## REGULATION CHANGES (APPLICABLE FROM 1<sup>ST</sup> APRIL) - UCI Regulations 2.2.017 and Specifications for organisers 4.4

Barriers are placed along sensitive sections of a race route in the interests of rider safety, although they may represent a danger if not installed if not installed correctly. These regulations aim to ensure the effectiveness of the barriers' role to enhance security.



## REGULATION CHANGES (APPLICABLE FROM 1<sup>ST</sup> APRIL) - UCI Regulations 2.2.017 and Specifications for organisers 4.4

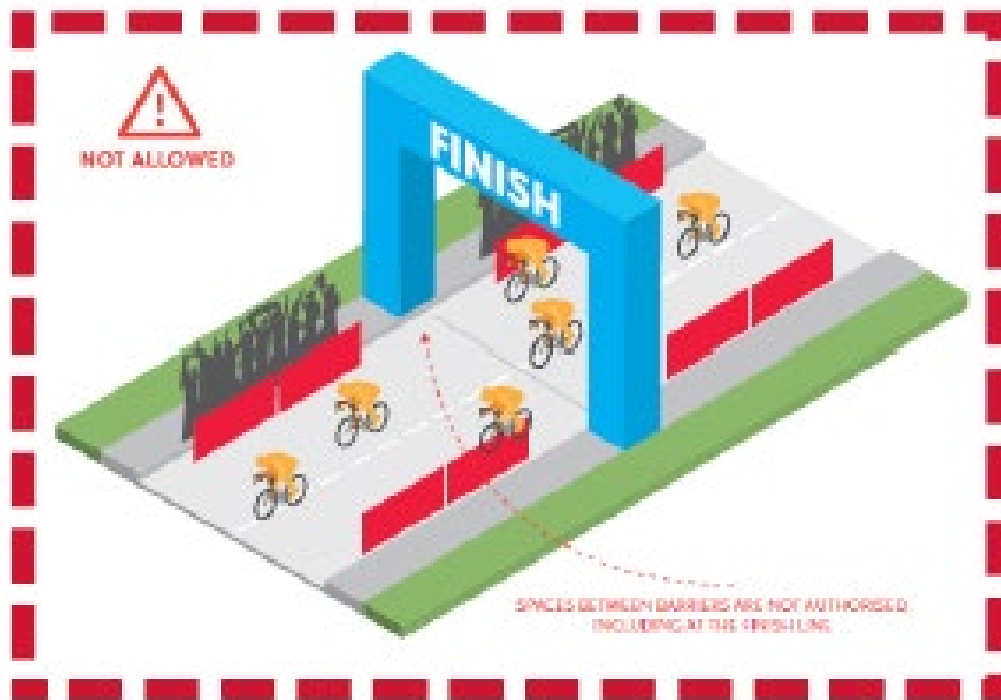
Barriers are placed along sensitive sections of a race route in the interests of rider safety, although they may represent a danger if not installed correctly. These regulations aim to ensure the effectiveness of the barriers' role to enhance security.



# Organisation Regulation Changes – Finish Line

REGULATION CHANGES (APPLICABLE FROM 1<sup>ST</sup> APRIL) - UCI Regulations 2.2.017 and Specifications for organisers 4.4

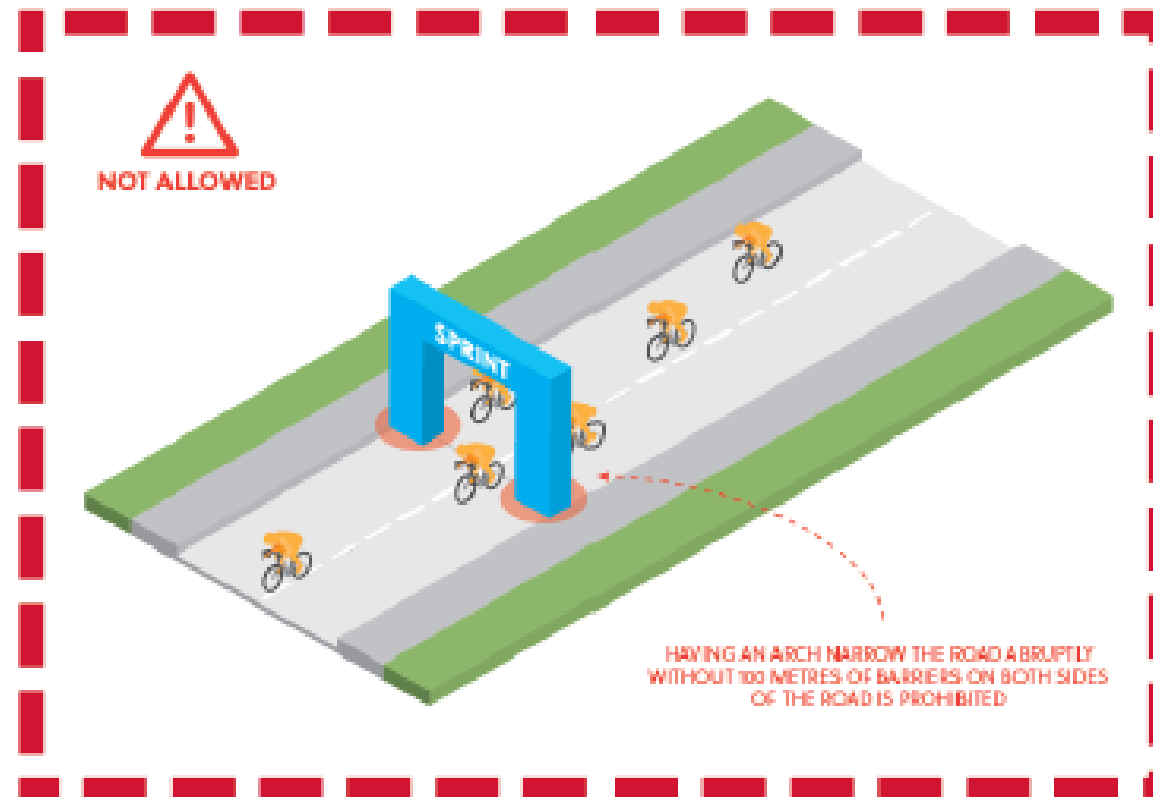
The finish area must be carefully prepared to make sure that all procedures run as smoothly as possible. The entire finish site must be organised in order to optimise the safety conditions.



# Organisation Regulation Changes – Intermediate Arches

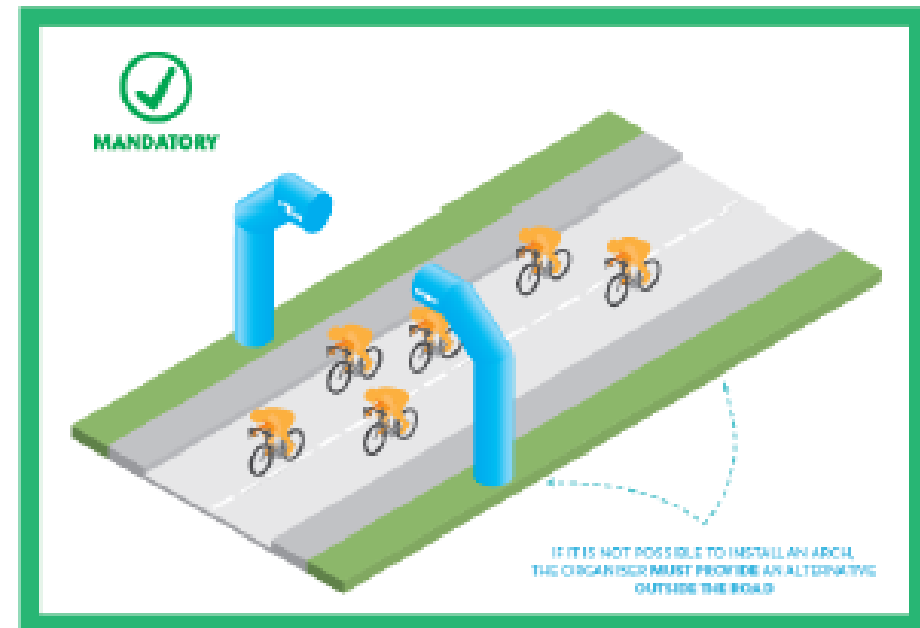
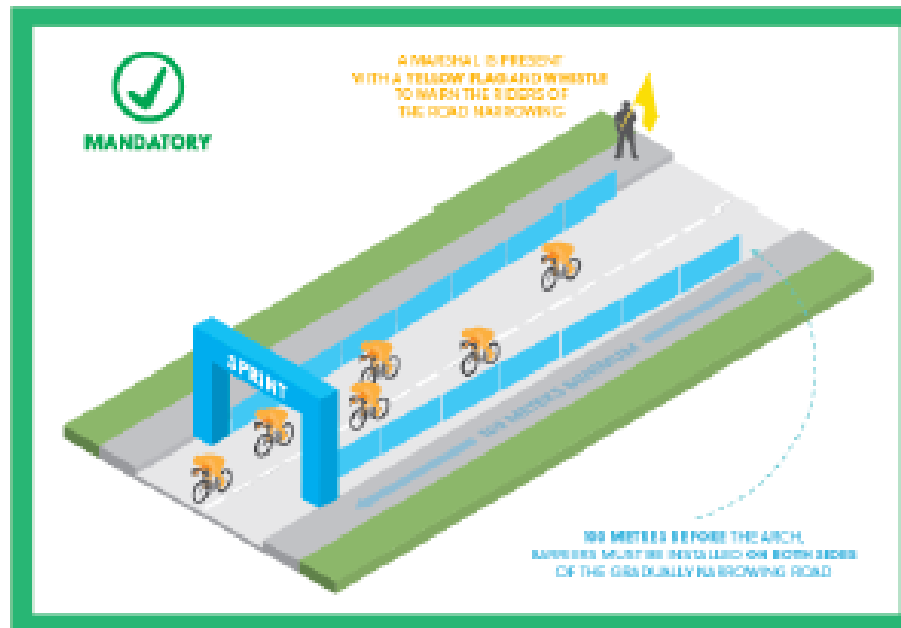
## REGULATION CHANGES (APPLICABLE FROM 1<sup>ST</sup> APRIL) - Specifications for organisers 2.12

The use of arch structures across the road is allowed in order to indicate major sporting points (intermediate sprint, remaining distance to finish, etc.). However, these structures must at no time represent a danger to the riders and race followers. The installation of these structures must avoid any sudden narrowing of the available road width for the riders.

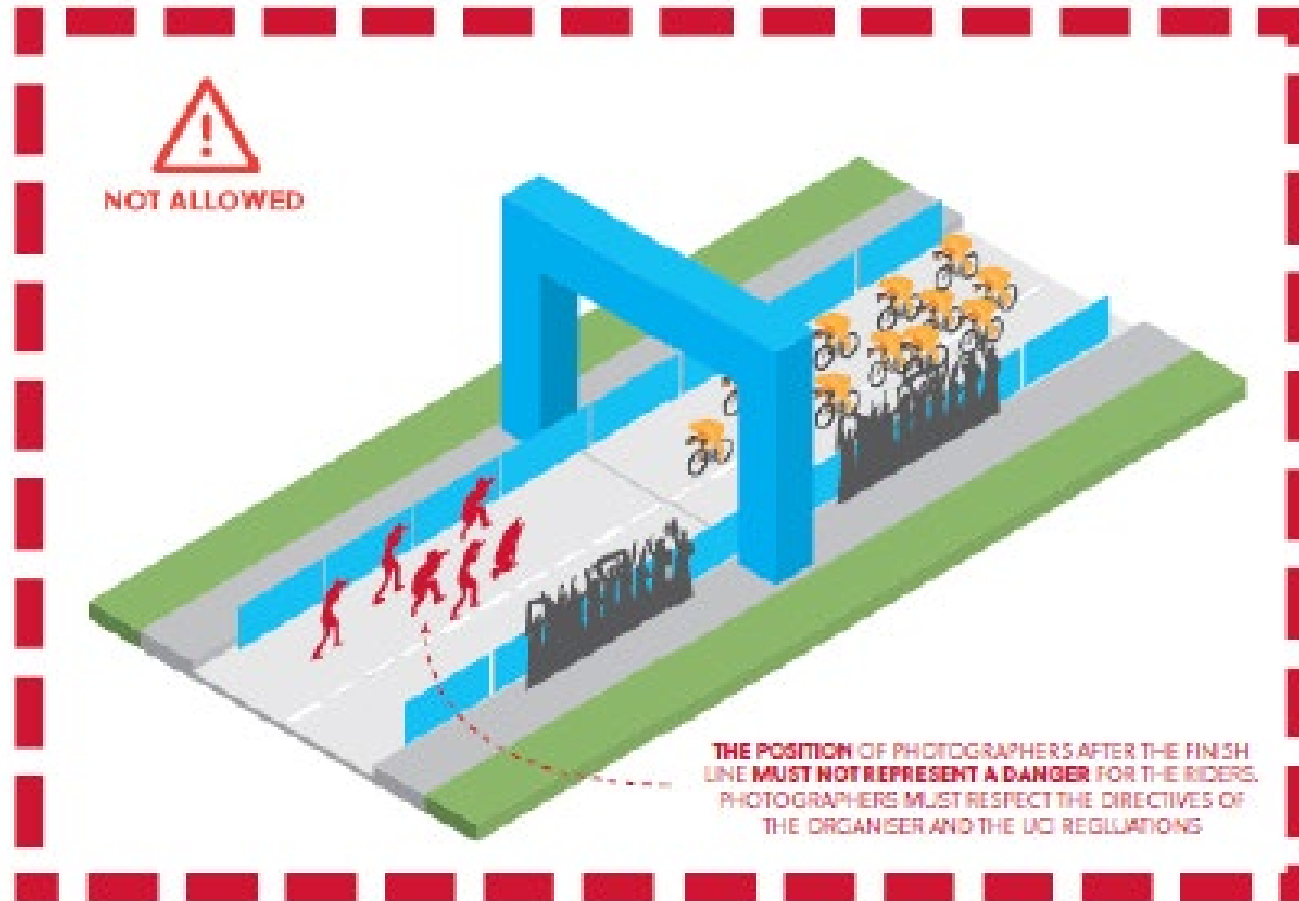


## REGULATION CHANGES (APPLICABLE FROM 1<sup>ST</sup> APRIL) - Specifications for organisers 2.12

The use of arch structures across the road is allowed in order to indicate major sporting points (intermediate sprint, remaining distance to finish, etc.). However, these structures must at no time represent a danger to the riders and race followers. The installation of these structures must avoid any sudden narrowing of the available road width for the riders.



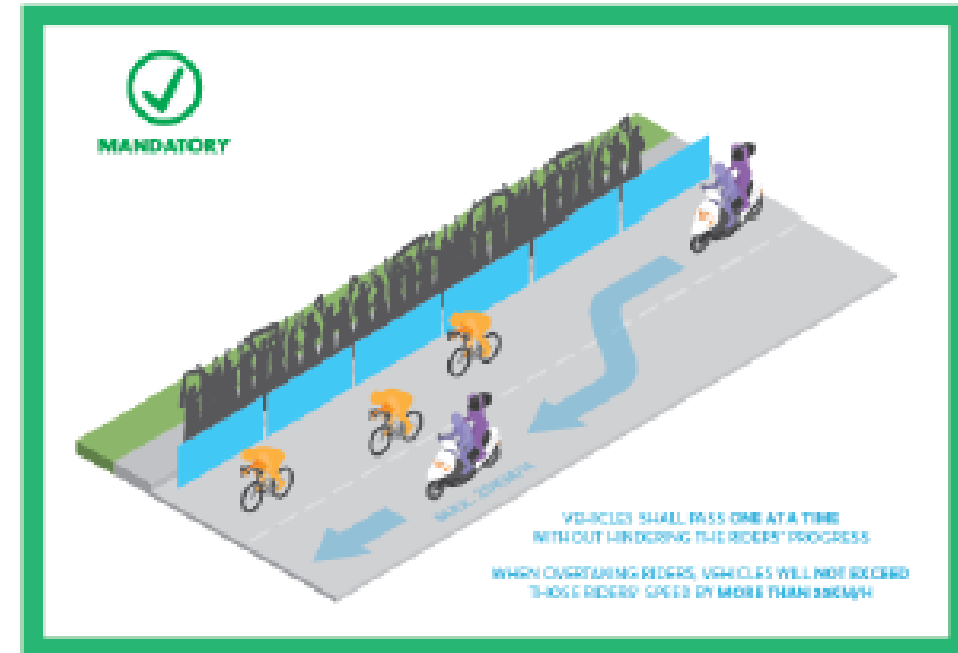
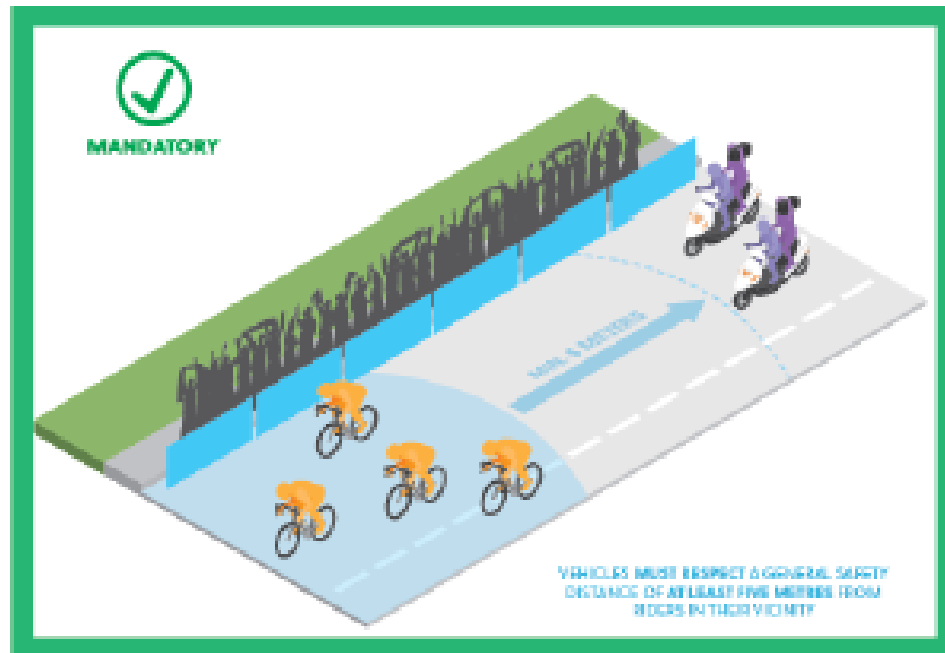
# Organisation Regulation Changes - Photographers



# Organisation Regulation Changes – Circulation During Race

## REGULATION CHANGES (APPLICABLE FROM 1<sup>ST</sup> APRIL) - Guidelines for vehicle circulation in the race convoy 3.B and 3.F

The riders have **priority** in the race **at all times**. Furthermore, vehicles must generally respect a **safety distance** of at least five metres from riders in their vicinity unless otherwise provided that a greater distance is required. Additional requirements for vehicle positioning are defined in the regulations and guidelines for vehicle circulation in the race convoy.



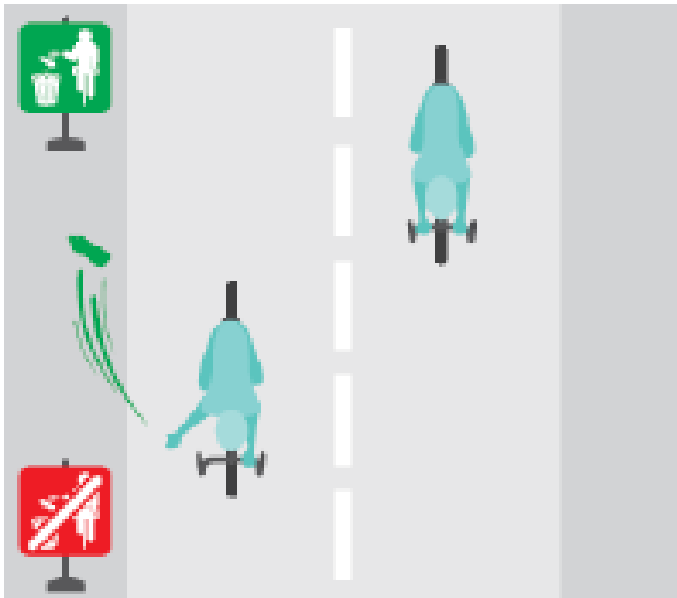


# Riders & Littering

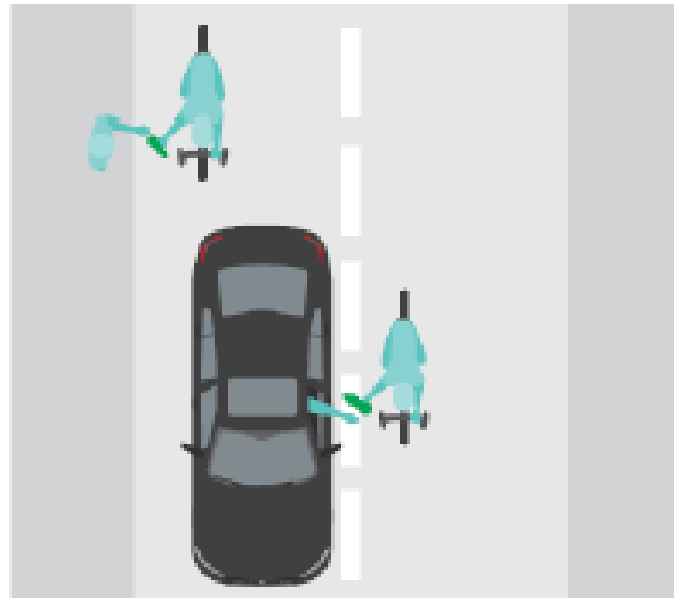
REGULATION CHANGES (APPLICABLE FROM 1<sup>ST</sup> APRIL) - UCI Regulations 2.2.025 and 2.3.025

Quite apart from being potentially dangerous in certain situations, the discarding of litter and objects outside dedicated zones is harmful to the environment and to the image of our sport. It also sets a bad example to non-professional cyclists.

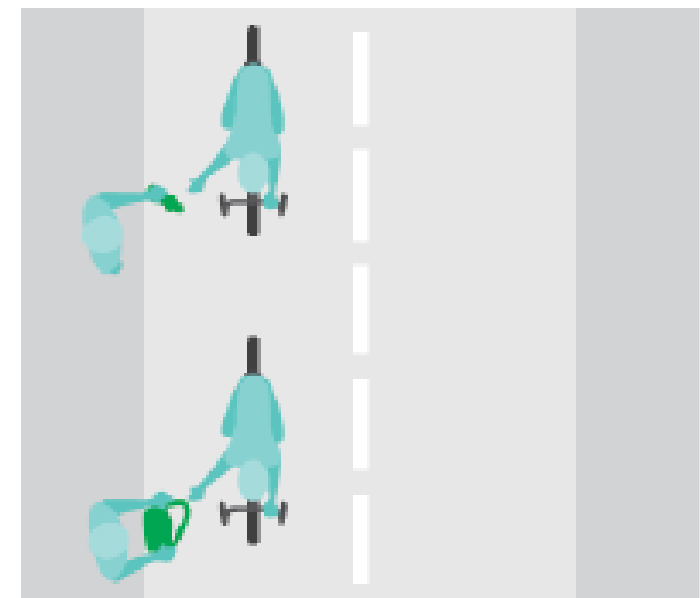
Allowed Discarding objects  
in designated waste zones



Allowed Returning bottles to team  
staff and race convoy vehicles



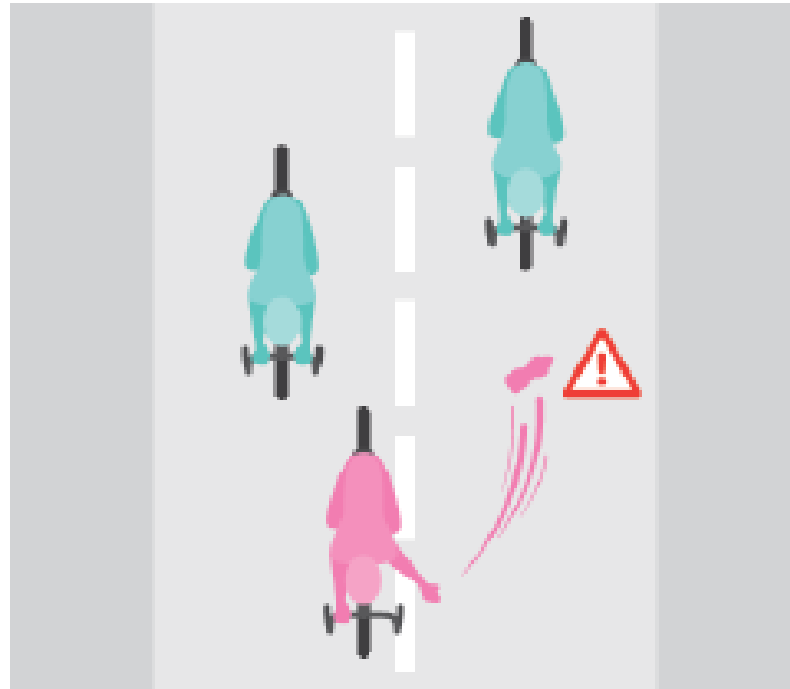
Allowed to feed riders with musettes  
and not only with bidons



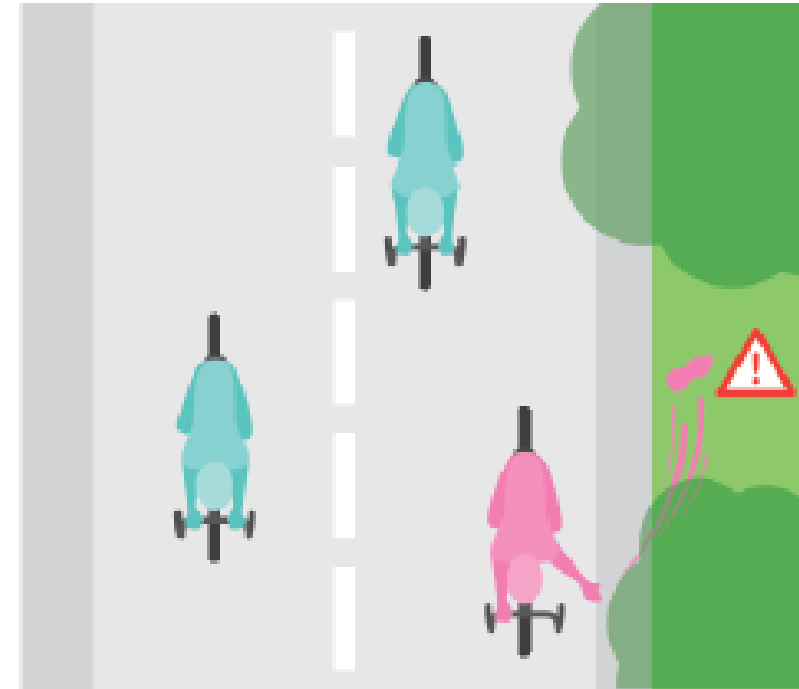
## REGULATION CHANGES (APPLICABLE FROM 1<sup>ST</sup> APRIL) - UCI Regulations 2.2.025 and 2.3.025

Quite apart from being potentially dangerous in certain situations, the discarding of litter and objects outside dedicated zones is harmful to the environment and to the image of our sport. It also sets a bad example to non-professional cyclists.

**Not Allowed** Throwing objects in a careless and dangerous manner

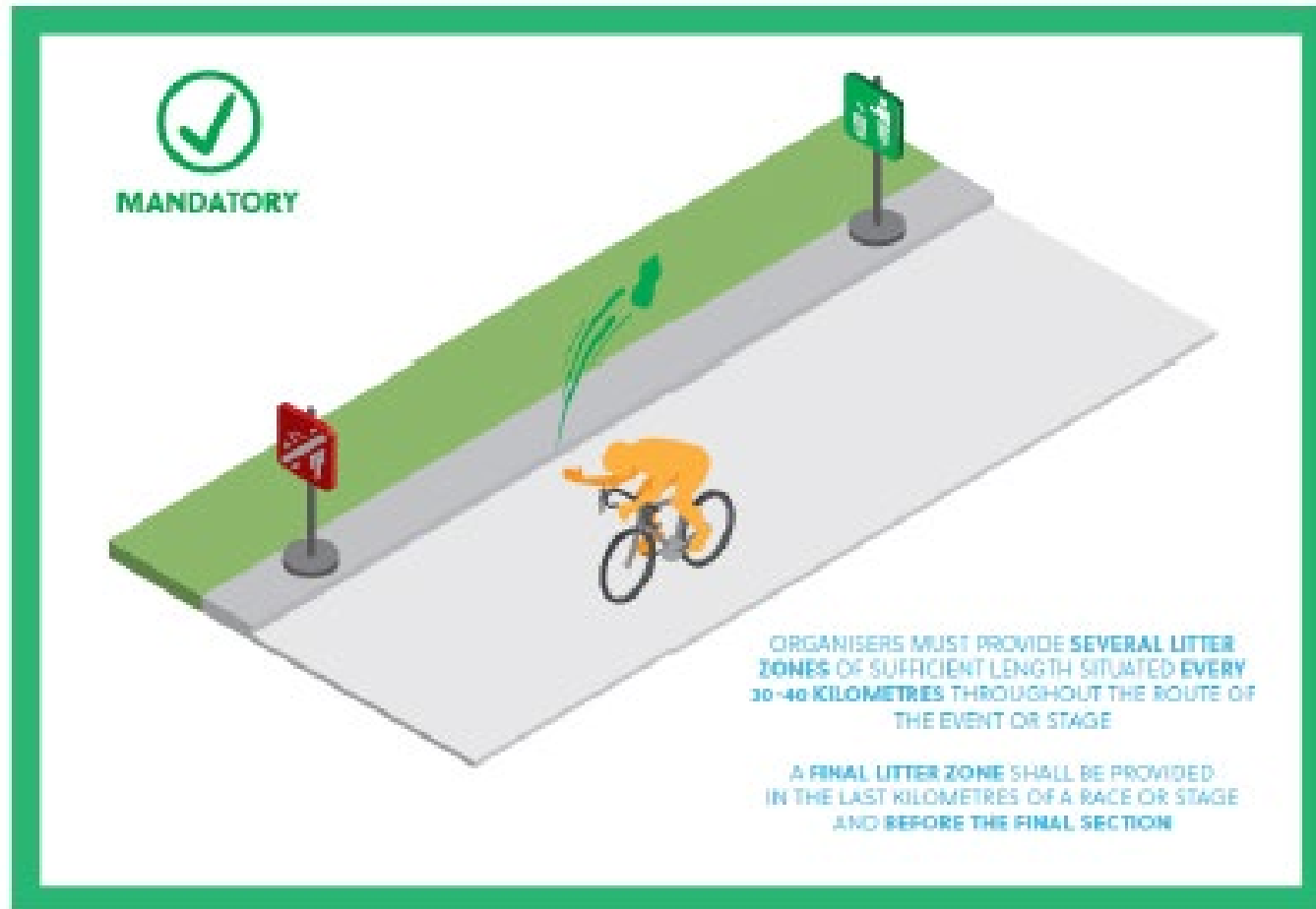


**Not Allowed** Throwing objects outside of litter zones



## REGULATION CHANGES (APPLICABLE FROM 1<sup>ST</sup> APRIL) - UCI Regulations 2.2.025 and 2.3.025

Quite apart from being potentially dangerous in certain situations, the discarding of litter and objects outside dedicated zones is harmful to the environment and to the image of our sport. It also sets a bad example to non-professional cyclists.



# Riders & Hazardous Positions

## REGULATION CHANGES (APPLICABLE FROM 1<sup>ST</sup> APRIL) - UCI Regulations 2.2.025

To help ensure the safety of everyone in a race, riders need to be in total control of their bike at all times, while setting an example to less experienced cyclists.

Riders must observe the standard position as defined by article 1.3.008. This position requires that the only points of support are the feet on the pedals, the hands on the handlebars and the seat on the saddle.

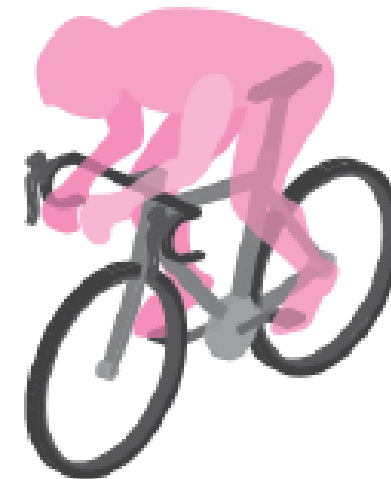
**Allowed** Hands on the handlebars and seated on the saddle



**Allowed** Hands on the handlebars and seated on the saddle in a tucked position



**Not Allowed** Using the forearms as a point of support on the handlebar (except in time trials)



## REGULATION CHANGES (APPLICABLE FROM 1<sup>ST</sup> APRIL) - UCI Regulations 2.2.025

To help ensure the safety of everyone in a race, riders need to be in total control of their bike at all times, while setting an example to less experienced cyclists.

Riders must observe the standard position as defined by article 1.3.008. This position requires that the only points of support are the feet on the pedals, the hands on the handlebars and the seat on the saddle.

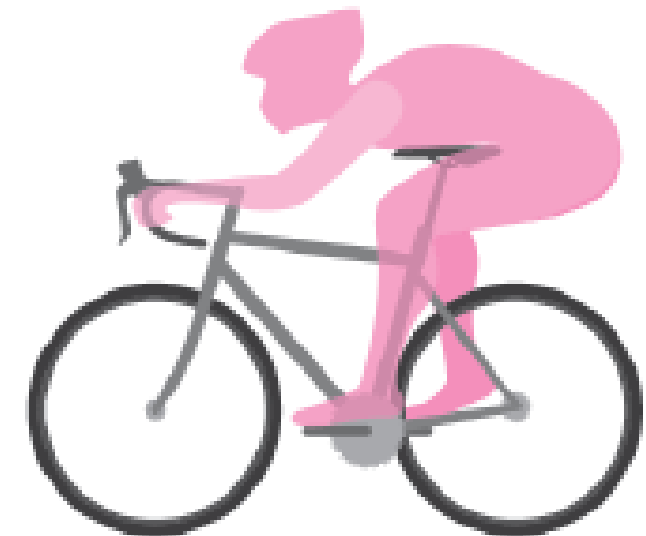
**Not Allowed** Seated on top tube



**Not Allowed** Leaning forward on handle bars



**Not Allowed** Leaning backwards and the saddle supporting the chest



# Practical Examples



Using forearms as a point of support is not allowed



These positions are considered as allowed.





Using forearms and computer as a point of support is not allowed



This position is considered as allowed.



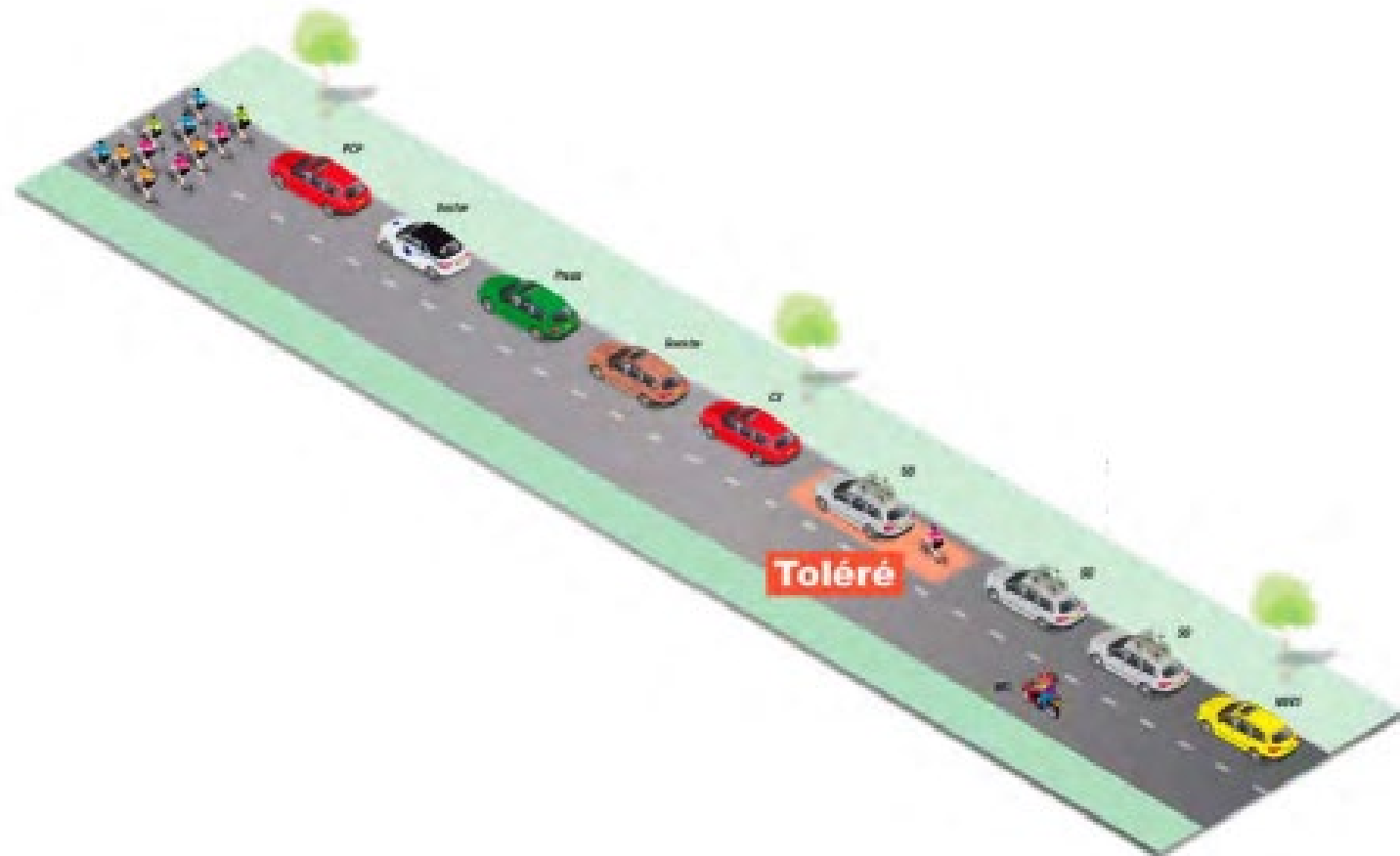


Using forearms as a point of support is not allowed

# Reminder – drafting behind a vehicle

## RETURN OF A RIDER

Riders using the slipstream of the column of vehicles to regain the peloton is tolerated. In this situation, a rider overtakes the vehicles, temporarily taking shelter behind them.



A vehicle is not allowed to move up the column of following vehicles with the rider who has suffered an incident in its slipstream.

